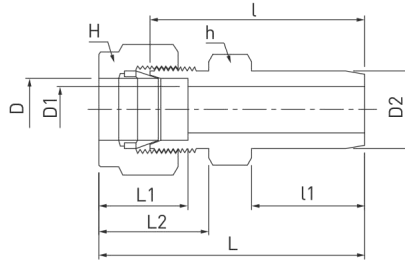


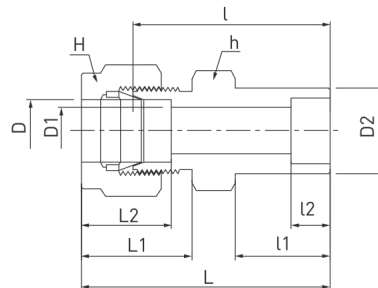
Butt Weld Connector **DBC**



♦ These figures are for reference purposes only.

Part No.	Tube O.D D		Male Pipe Size D2		D1 Min	Width across flat				L1	L2	l	l1	L
	in	mm	in	mm		h		H						
						in	mm	in	mm					
DBC 2-2P	1/8	3.17	1/8	10.30	2.28	7/16	11.11	7/16	11.11	12.70	15.24	23.87	9.65	31.24
DBC 3-2P	3/16	4.76	1/8	10.30	3.04	7/16	11.11	1/2	12.70	13.71	16.00	24.63	9.65	31.24
DBC 4-2P	1/4	6.35	1/8	10.30	4.82	1/2	12.70	9/16	14.28	15.24	17.78	25.40	9.65	32.76
DBC 4-4P	1/4	6.35	1/4	13.70	4.82	9/16	14.28	9/16	14.28	15.24	17.78	30.48	14.22	37.84
DBC 5-2P	5/16	7.93	1/8	10.30	5.08	9/16	14.28	5/8	15.87	16.25	18.54	26.67	9.65	34.03
DBC 5-4P	5/16	7.93	1/4	13.70	6.35	9/16	14.28	5/8	15.87	16.25	18.54	31.24	14.22	38.60
DBC 6-4P	3/8	9.52	1/4	13.70	7.11	4/7	15.87	11/16	17.46	16.76	19.30	32.51	14.22	39.87
DBC 6-6P	3/8	9.52	3/8	17.10	7.11	11/16	17.46	11/16	17.46	16.76	19.30	32.51	14.22	39.87
DBC 6-8P	3/8	9.52	1/2	21.30	7.11	7/8	22.22	11/16	17.46	16.76	19.30	38.86	11.05	43.23
DBC 8-6P	1/2	12.70	3/8	17.10	10.41	13/16	20.63	7/8	22.22	22.86	21.84	33.27	14.22	43.43
DBC 8-8P	1/2	12.70	1/2	21.30	10.41	7/8	22.22	7/8	22.22	22.86	21.84	38.86	19.05	49.02
DBC 8-12P	1/2	12.70	3/4	26.67	10.41	1-1/16	26.98	7/8	22.22	22.86	21.84	40.38	19.05	50.54
DBC 10-8P	5/8	15.87	1/2	21.30	12.70	15/16	23.81	1	25.40	24.38	21.84	38.86	19.05	49.02
DBC 12-12P	3/4	19.05	3/4	26.67	15.74	1-1/16	26.98	1-1/8	28.57	24.38	21.84	40.38	19.05	50.54
DBC 16-16P	1	25.40	1	33.40	22.35	1-3/8	34.92	1-1/2	38.10	31.24	26.41	50.03	23.87	62.23

Socket Weld Connector **DWC**

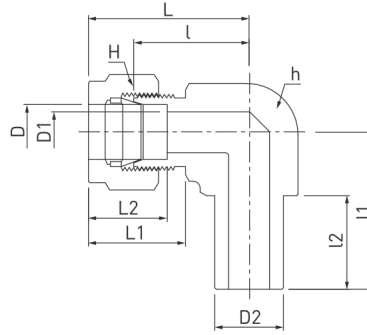


♦ These figures are for reference purposes only.

Part No.	Tube O.D D		D1 Min	D2	Width across flat				L2	L1	l	l1	l2	L
	in	mm			h		H							
					in	mm	in	mm						
DWC 2-2	1/8	3.17	2.28	7.87	7/16	11.11	7/16	11.11	12.70	15.24	22.35	8.63	6.35	28.95
DWC 4-4	1/4	6.35	4.82	11.17	1/2	12.70	9/16	14.28	15.24	17.78	26.16	10.41	7.87	33.52
DWC 6-6	3/8	9.52	7.11	15.74	5/8	15.87	11/16	17.46	16.76	19.30	30.22	11.93	9.65	37.59
DWC 8-8	1/2	12.70	10.41	19.05	13/16	20.63	7/8	22.86	22.86	21.84	30.98	11.93	12.70	41.14
DWC 12-12	3/4	19.05	15.74	26.67	1-1/16	26.98	1-1/8	28.57	24.38	21.84	33.27	11.93	14.22	43.43
DWC 16-16	1	25.40	22.35	33.27	1-3/8	34.92	1-1/2	38.10	31.24	26.41	40.38	40.38	19.05	52.57



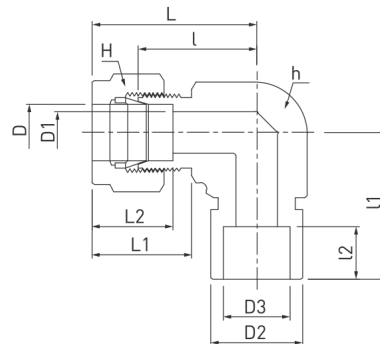
Butt Weld, Elbow **DBE**



♦ These figures are for reference purposes only.

Part No.	Tube O.D D		Male Pipe Size D2		D1 Min	Width across flat				L2	L1	l	l2	L	l1
	in	mm	in	mm		h		H							
						in	mm	in	mm						
DBE 2-2P	1/8	3.17	1/8	10.30	4.82	1/2	12.70	9/16	14.28	15.24	17.78	19.55	9.65	26.92	18.79
DBE 4-4P	1/4	6.35	1/4	13.70	4.82	1/2	12.70	9/16	14.28	15.24	17.78	19.55	14.22	26.92	23.36
DBE 6-4P	3/8	9.52	1/4	13.70	7.11	5/8	15.87	11/16	17.46	16.76	19.30	23.11	14.22	30.48	25.40
DBE 8-8P	1/2	12.70	1/2	21.30	10.41	13/16	20.63	7/8	22.22	22.86	21.84	25.90	19.05	36.06	33.02
DBE 12-12P	3/4	19.05	3/4	26.67	15.74	1-1/16	26.98	1-1/8	28.57	24.38	21.84	29.71	19.05	39.87	36.83

Socket Weld Elbow **DWE**



♦ These figures are for reference purposes only.

Part No.	Tube O.D D		D1 Min	D2	Width across flat				L2	L1	l	l2	L	l1
	in	mm			h		H							
					in	mm	in	mm						
DWE 4-4	1/4	6.35	4.82	12.70	1/2	12.70	9/16	14.28	15.24	17.78	19.55	7.87	26.92	19.55
DWE 6-6	3/8	9.52	7.11	15.74	5/8	15.87	11/16	17.46	16.76	19.30	23.11	9.65	30.48	23.11
DWE 8-8	1/2	12.70	10.41	20.57	13/16	20.63	7/8	22.22	22.86	21.84	25.90	12.70	36.06	25.90